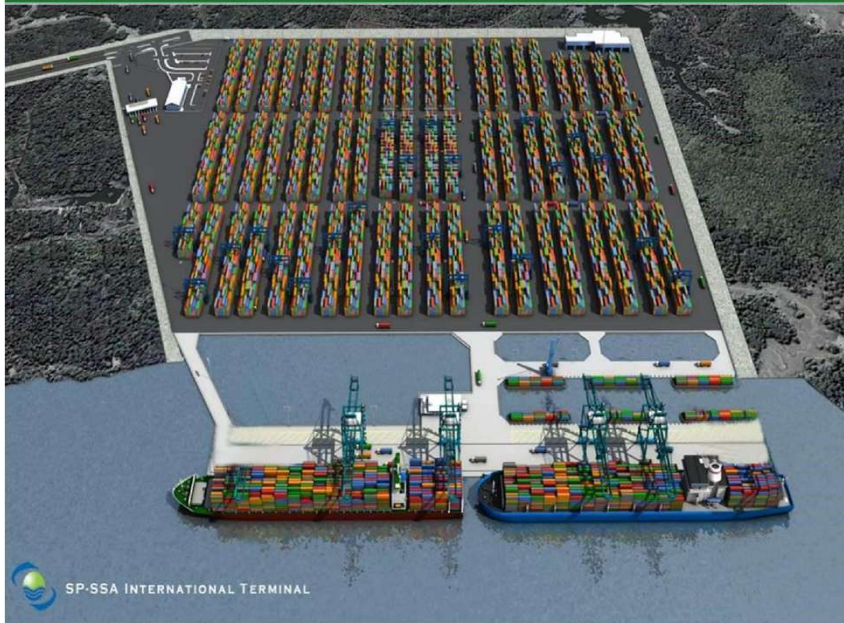


SSIT[®]

SP-SSA INTERNATIONAL TERMINAL (SSIT)

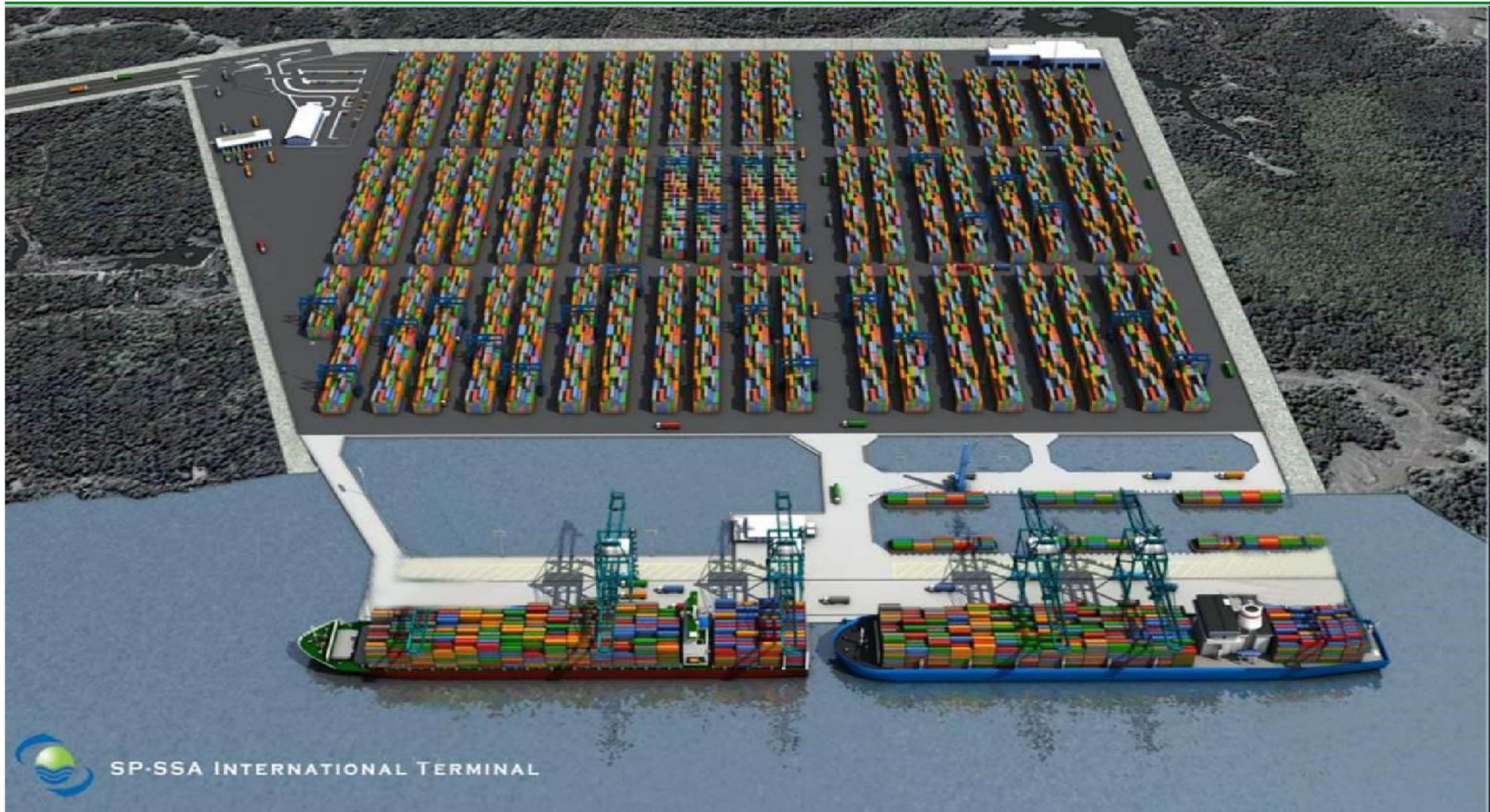


Content

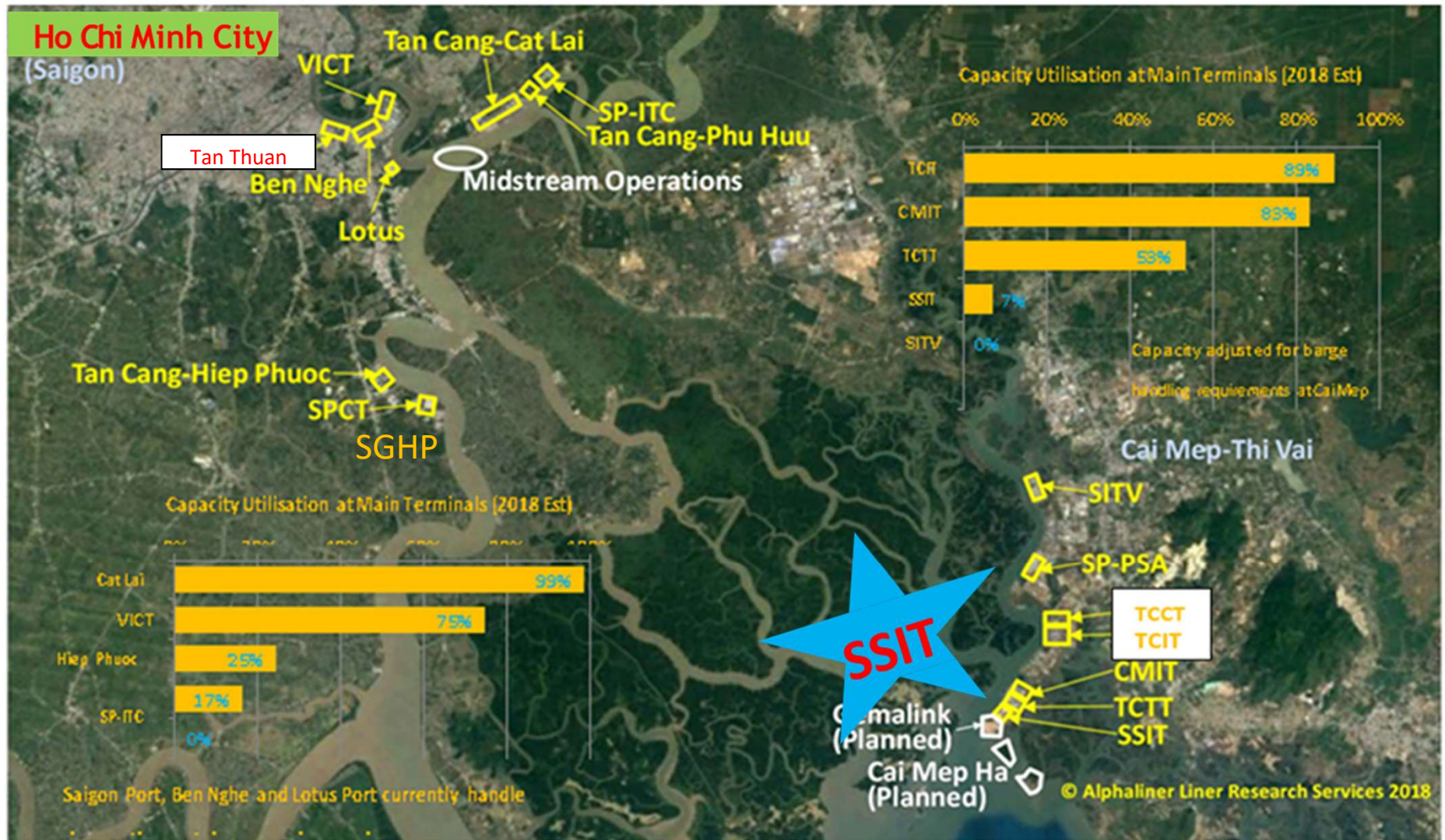
- ✓ Background Information
- ✓ Key Facts and Figures
- ✓ Cai Mep and HCMC terminal Utilization by Alphaliner
- ✓ Cai Mep Throughput Growth: 2011-2019
- ✓ SSIT Yard Expansion 2019
- ✓ Barge Connections
- ✓ Cat Lai Giang Nam Terminal Location
- ✓ SSIT Service Offers

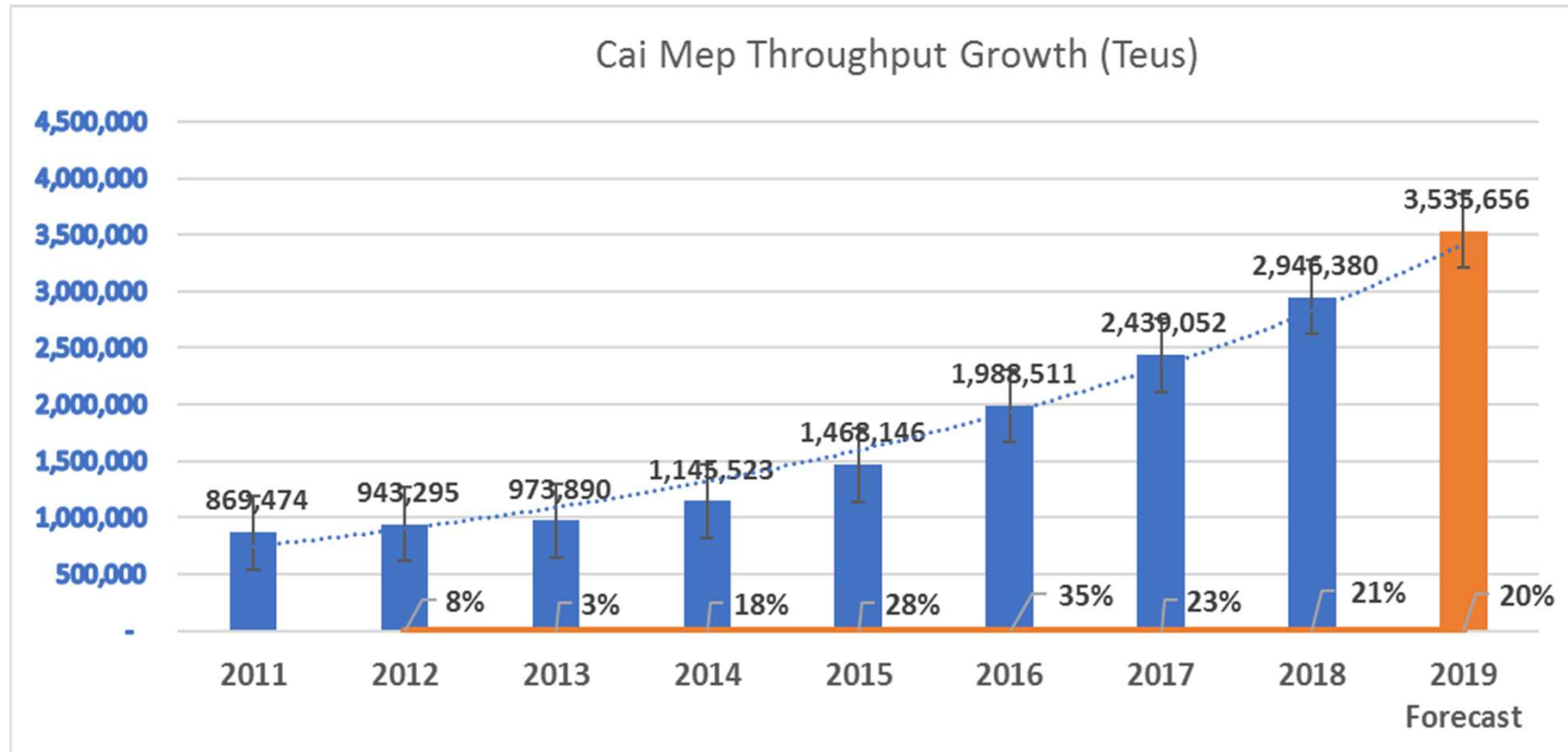
SSIT is a Joint Venture between SSA Marine (50%), Saigon Port (39%) and Vinalines (11%).

SSIT has been in Bulk operation from August 2014 and Container operation since 14 June 2018.



General Data		Equipment	
✓ Berth length with mooring dolphin	655m	✓ STS Cranes	4 x 23 rows Outreach
✓ Container barge berth	425m	✓ eRTGs	12
✓ Total area	60ha	✓ Tractors	40
➤ Container yard area	10ha	✓ Full Container Handlers	4
➤ Vacant land	50ha	✓ Empty Container Handlers	3
✓ Vessel size	167,000 DWT, can increase to 200,000 DWT	✓ Weigh Bridges (100 mt)	2
✓ Depth alongside	16.5m	✓ Mooring buoy	1
✓ Turning Basin Diameter	700m		
✓ Channel depth	14m		
✓ Distance from VT Pilot Station	14nm		
✓ Tidal Range	-0.5 – 3.6m		





(*) Throughput is calculated by Vessel teus, excluding about additional 90% of import and export containers carried by barges at the terminals.

➤ From 2014, container throughput keeps 2-digit increase annually.

Source: Vietnam Port Association (VPA)

SSIT YARD EXPANSION 2019



- Yard Expansion in 2019: 2.9 ha
- To be finished by Jul 2019
- Berth Capacity: 1,100,000 teus
- Yard Capacity: 920,000 teus



Site photo update



Fast Barge Connection

Dong Nai / Binh Duong Province

- Binh Duong Port
- Dong Nai Port
- Long Binh Port (Sowatco) in District 9, HCMC

Ho Chi Minh City

- Transimex ICD
- Tanamexco ICD
- So Trans ICD
- Phuc Long ICD
- Phuoc Long ICD

- Giang Nam Cat Lai; SP-ITC terminals
- Tan Thuan Port, Saigon Hiep Phuoc Terminal

Transit Time

- 6-8 Hours

Cambodia

- Barge Services by GLS, Newport Cypress, Gemadept...
- 48 Hour Transit Time



Binh Duong
Port





- ✓ Cat Lai Giang Nam Terminal is located in between of the Cat Lai Terminal A/B and Terminal C (marked in yellow) with the same Customs Control.
- ✓ Total area: 39.5 ha with 5 berths for barges and 10-12 quayside cranes.
- ✓ Full operation from 1st Apr 2019.



- Deep-water Terminal with modern equipment to handle ULCVs: 14K+ TEU vessels.
- Berth Windows from Monday-Sunday
- Productivity: 33+ MPH
- Turning Basin: 700m
- Dedicated barge berth: 425m
- Fast Barging Connection
- Professional & Experienced Team
- Safety Focus
- Customer Satisfaction

THANK YOU VERY MUCH